



# Declaration of Performance

**Identification Code: VS7 75-300mm**

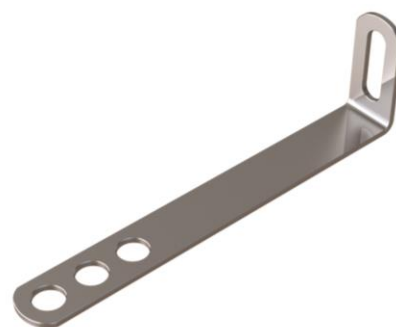
Meeting the requirements of Annex ZA, EN 845-1:2003+A1:2008

## Description of Use:

Asymmetrical wall tie used to connect new masonry to an existing structure.

**Testing Body:** Lucideon Ltd  
Queens Road  
Penkull  
Stoke on Trent  
ST4 7QL

**Notification Body No:** 1289



## Performance:

Shear Load Capacity : (Top of slot)	650N*
Tensile Load Capacity: (Top of slot)	490N
Tensile Load Capacity: (Bottom of slot)	4880N
Compressive Load Capacity:	2490N
Water Shedding Capacity:	Non-Resistant
Durability:	Material coating reference 3
Dangerous Substance:	N/A
Minimum Embedment:	62.5mm
Minimum Mortar Joint:	10mm

Authorised Signature

Philip Travis, Managing Director

1<sup>st</sup> August 2023

\*the stated shear load capacity is based on a 10mm gap between structure and masonry.

