



# Declaration of Performance

**Identification Code: VS4-150-COLLAR**

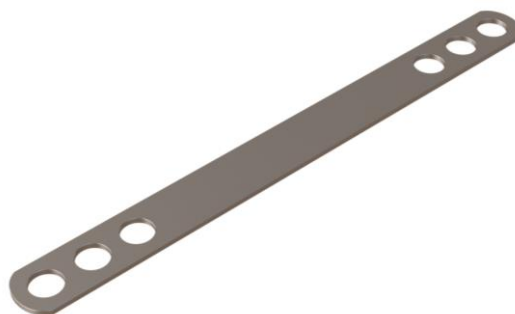
Meeting the requirements of Annex ZA, EN 845-1:2013+A1:2016

## Description of Use:

Symmetrical wall tie used to connect two leaves of a collar jointed wall manufactured from 3mm thick material.

**Testing Body:** Lucideon Ltd  
Queens Road  
Penkull  
Stoke on Trent  
ST4 7QL

**Notification Body No:** 1289



## Performance:

Shear Load Capacity:	2060N
Water Shedding Capacity:	N/A
Durability:	Material coating reference 3
Dangerous Substance:	N/A
Minimum Embedment:	70mm
Minimum Mortar Joint:	10mm

Authorised Signature

Philip Travis, Managing Director

21<sup>st</sup> March 2023

