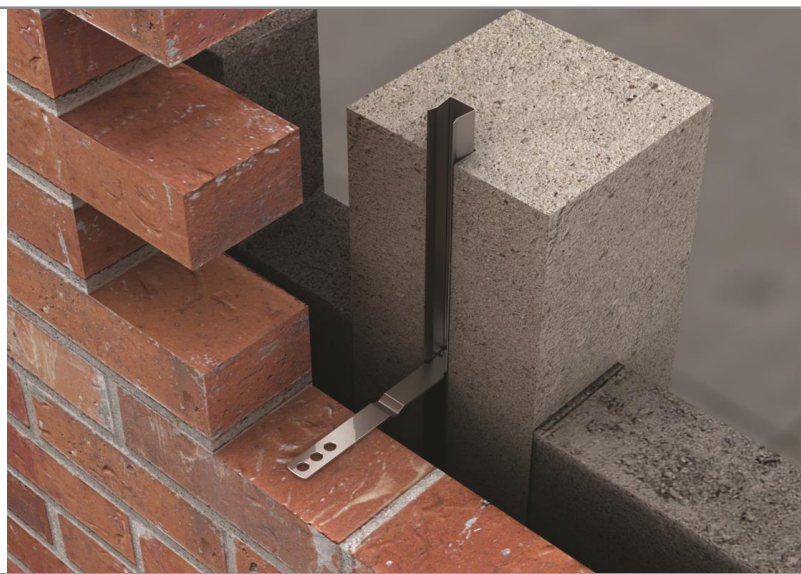
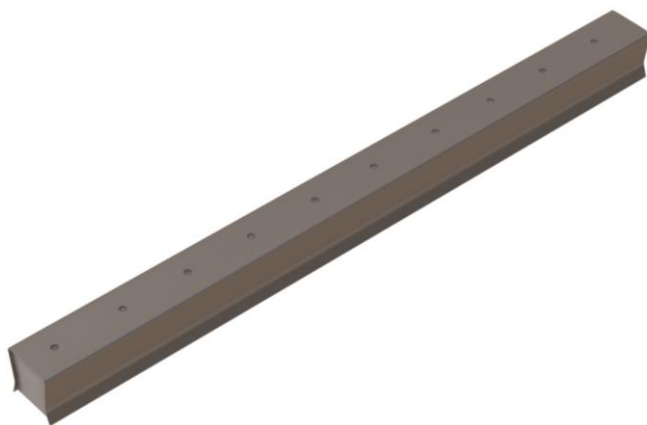


Channel Systems

These products both allow vertical movement whilst offering horizontal restraint. The channel system tends to be face-fixed while the slot is usually cast into concrete. These systems may be used to overcome differences in coursing between masonry leaves.



Product

V29 Dovetail Slot

Cast in dovetail slot, available in stainless steel or pre-galvanised steel. V29s are pre-filled with polystyrene to prevent concrete ingress. Vista recommends that V29s are used in conjunction with VS8 ties to restrain to brickwork.

Sizes	Units	Per
100mm	250	Box
150mm	250	Box
300mm	25	Bundle

Performance

VS8 75mm-300mm used with V29	
Tensile Load (cast in V29)	2960N
Tensile Load Mortar End	5636N
VS8 75mm-200mm	
Compressive Load Capacity	4896N
VS8 200mm-300mm	
Compressive Load Capacity	1470N

Safety Precautions

V29 Dovetail Slots are manufactured from sheared plate and strips so may contain sharp edges. Suitable personal protection should always be used when handling/installing these products.

Head Office: Vista Engineering Ltd, Carr Brook Works, Elnor Lane, Whaley Bridge, High Peak SK23 7JN
Tel: Sales: +44 (0) 1663 736 700 Fax: +44 (0) 1663 736 710

Scotland Office: Vista Engineering Ltd, 79 Dunn Street, Parkhead, Glasgow, G40 3PA
Tel: +44 (0) 141 613 3144 Fax: +44 (0) 141 613 3031

web: www.vistaeng.co.uk email: sales@vistaeng.co.uk