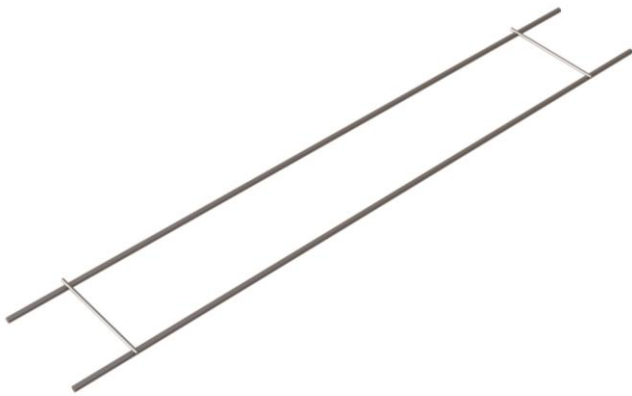


## Brickwork Reinforcement

This type of product increases the rigidity of masonry panels by introducing steel into the bed joint of the wall, either to merely resist cracking or in a more structural sense.



### Product

#### VW Vista Weld

Vista have developed Vista Weld to meet the ever increasing requirements of specifiers. Now available in two types, Vista Weld is a welded ladder type Bed Joint Reinforcement with 3.6 outer wires. It is generally used as a structural product but also ideal for crack control. Available in Stainless Steel Grade 304 s15 and in numerous widths to suit any brick and block thickness. Vista Masonry Reinforcement conforms to BS 5628 : Part 2 200. Also available in Galvanised.

Product Width	Wall Width
60mm	100mm
100mm	140mm
150mm	190mm
160mm	200mm
175mm	215mm

### Performance

VW Vista Weld	
Length	2700mm +/- 1.5%
Profile Height	4.0mm +/- 0.4mm
Longitudinal Wire Size	3.6mm +/- 0.1mm
Cross Wire Size	2.5mm +/- 0.1mm
Pitch of Cross Wires	450mm +/- 3.0%
Characteristic Yield Strength	500N/mm <sup>2</sup>
Lap Length	225mm
Shear Load Capacity Welds	4306N

	VW-060-STST	VW-100-STST	VW-150-STST
Width	60mm +/- 1.5mm	100mm +/- 1.5mm	150mm +/- 1.5mm
Bond Strength	5220N	5080N	4306N

#### Safety Precautions

VW Vista Weld is manufactured from sheared plate and strip so may contain sharp edges. Suitable personal protection should always be used when handling/installing these products.